



GemCorp Recycling & Technologies Pvt. Ltd.  
Navi Mumbai, India

***Circular  
Economy  
Market Makers***

***Blockchain &  
QR-Based  
Traceability***

***Recycling Plastic,  
Metal, Paper, Wood,  
Rubber and Glass***

***Solving the  
problem of  
waste collection***

***Uplifting Lives in  
Developing Economies***

# About Gemini

1989

Gemini Corporation NV was founded

99 Credit Rating Achieved



Board member of



Member of



Official Supporter



Global Treaty on Plastic Pollution signed at UN Environment Assembly.

500+ Professionals Worldwide

Headquartered in **Belgium**

4A1 Credit Rating



GEMINI



## Core Competencies

Collection, Recycling, Sourcing, Logistics, Reprocessing, Finance & Documentation, Warehousing & Sorting Facilities.

We operate through 47 owned or affiliate offices with 50 warehouses in 36 countries.

Exporting over **100,000 TEUs** (Twenty-foot Equivalent Unit) per annum to and from more than 75 countries.

The group collects over **400,000 tonnes of recyclable plastics** from over 500 locations in 35 countries for reprocessing at over 250 plants in 40 countries. Apart from plastics, we give a second life to over **4 Billion pounds of rubber, metals and paper including 50 Million tyres, 300,000 cars and 5 Million refrigerators.**

# Core Idea - Circular Economy

GEMINI

1 Million Tonnes

of plastic waste is generated globally **every day**

By 2050

12 Billion Tonnes

of plastic waste will be generated

2000 Truck loads

of plastic waste every hour

Less than

10%

of that will be recycled



# Chairman

## Surendra Patawari

*Gemini Corporation NV*

Mr. Surendra Patawari is the Founder and Chairman of Gemini Corporation. Mr. Patawari is based in Antwerp, Belgium, the headquarters of Gemini. Since 1989, under his leadership, Gemini has succeeded in becoming one of the world's leading circular economy market makers. He is very passionate about recycling and also gives great importance to social responsibility.

### Gemini Corporation NV

Waterwilgweg 6 2050  
Antwerp, Belgium

info@geminiCorp.be  
www.geminiCorp.be  
+32 (0)3 254 04 14

Mr. Surendra Patawari is a Board Member of the global Alliance to End Plastic Waste (AEPW) and is a winner of several awards, viz. the US President's "E" Award, IERC Honorary Award, Global Business Leader Award (Institute of Chartered Accountants of India), Global Recycler of the Year (MRAI). Mr. Surendra Patawari is amongst the top 4 recyclers in the world as per Recycling International magazine.

He is an active participator in the Global Plastic Treaty and Government policy making decisions regarding Plastics and Circular Economy. He is also a key speaker at the World Economic Forum events and other industry associations like Fortune CEO Initiative, ISRI, BIR, BMR, MRAI, BVSE, ISWA etc.

Mr. Surendra believes in giving back and sharing with society. He has adopted 12 Indian villages for their medical needs. He has built two schools that now educate 400 students. Moreover, he has planted & maintained a green forest of 100,000 trees in the Indian desert.

GEMINI

GEMINI

“Waste is not waste until it is wasted. On the contrary, it is a resource full of opportunities.”

## Surendra Patawari

*Chairman*



# Gemcorp Recycling & Technologies

a subsidiary of Gemini Corporation NV



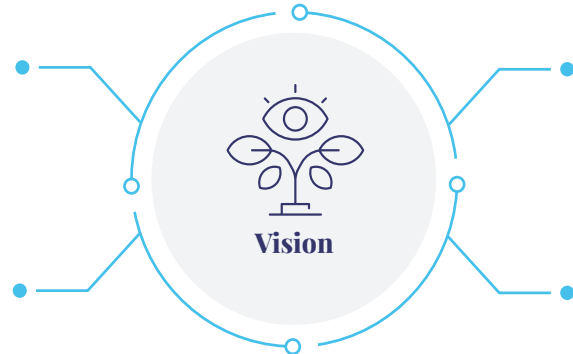
GemCorp seeks to strengthen the circular economy ecosystem in a just and equitable manner with focus on social upliftment, efficient logistics, provision for working capital, education, end-to-end traceability and on-ground action.

## Responsible Recycler

Ensure that all waste collected is recycled by GemCorp or through PCB certified recyclers

## Investors

Strengthen the value chain through machinery, infrastructure & financial support



## Supply Chain Experts

Provide end-to-end transparency & traceability to ensure businesses meet compliance

## Collection Services

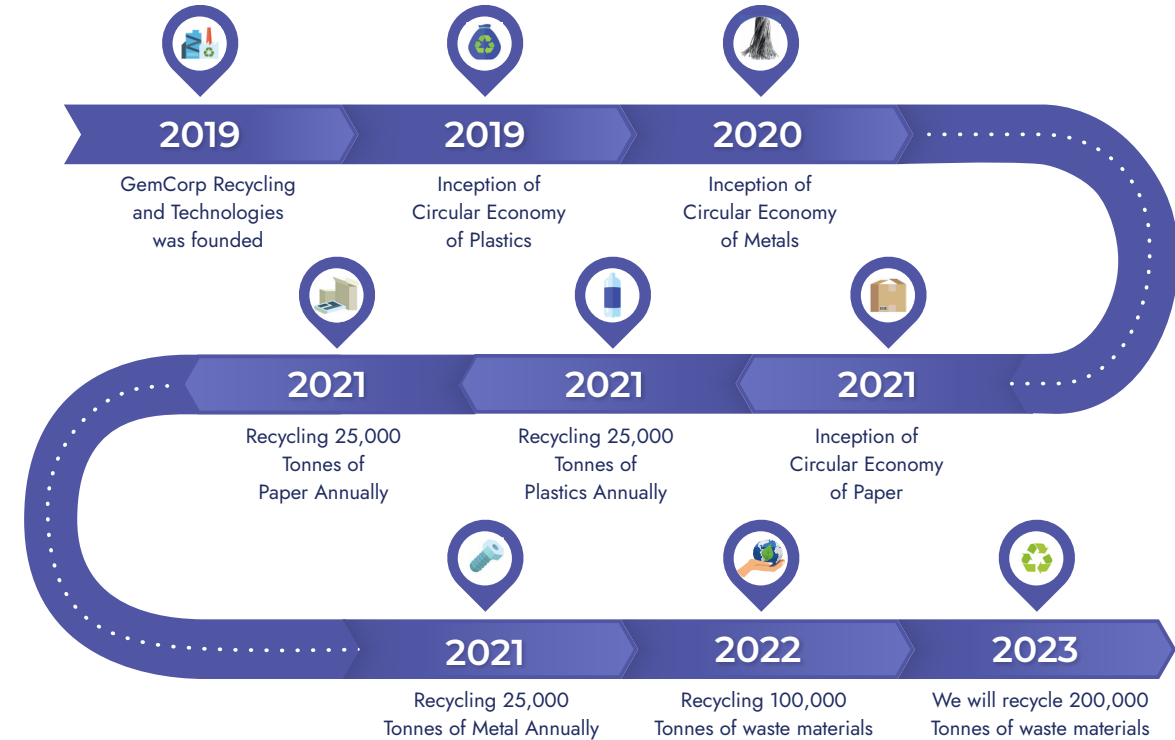
Partnership with small aggregators to big industries for waste collection

## End-to-End Circular Economy Services

# The GemCorp Journey



“Creating sustainable infrastructure to enable long term recycling solutions in developing economies”



# Solving the issue of waste collection by building collection network



## Uplifting

**10** Families per week

Target to uplift 1000 families

## Collection & Recycling

**180,000** Tonnes of scrap annually

## Installing

**400** Baling machines

to increase recycling

## Transparent & Traceable

**Supply Chain**

No Child Labour, Guaranteed Fair Wages, Sanitation, Health & Safety, Insurance

## Increasing the monthly collection volume by

**4** Times

for local informal collectors

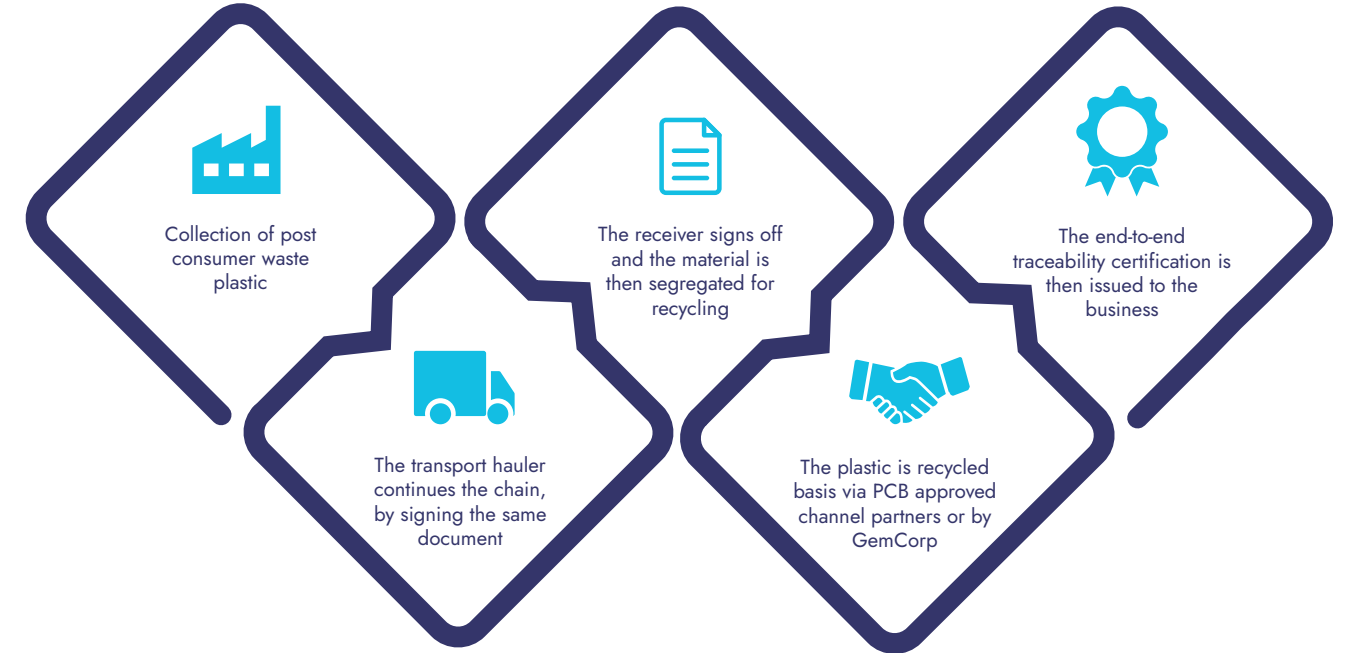
## Setting up

**21** Mini recycling plants

in India and helping brands achieve Global Sustainability & Recycling goals

**New plant coming up in Gujarat, India**

# EPR & Traceability



# ReMake® - Plastic Credit Program



ReMake

Plastic Credits

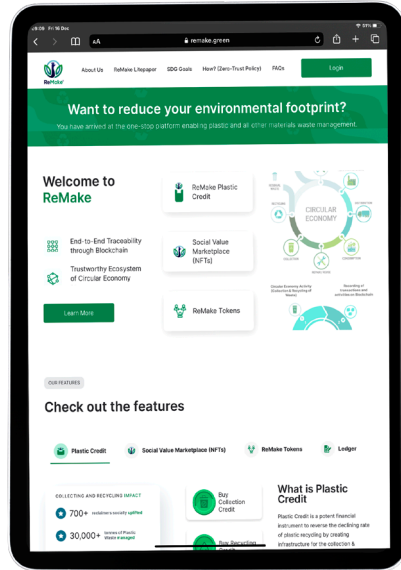
Measurable  
Verifiable  
Transferable

units of plastic that has been collected from the environment or recycled.

The mechanism on which the ReMake program is developed:

- ✔ Technology
- ✔ Social Value Creation
- ✔ Financial Ingenuity
- ✔ ReMake Standards & Governance

ReMake Platform for plastic credit program



Blockchain-based ReMake Plastic Credit Certificate



# UniGem® - The Digital Marketplace



UniGem®

Reliable  
Blockchain-based  
End-to-end Traceable

marketplace for EPR and Plastic credits.

The blockchain system provides QR-based tracking system and unique hash keys to identify and ensure that the integrity & reliability of the waste collection and recycling data and confirms the circular loop.

©UniGem is a registered trademark of GemCorp Recycling and Technologies Pvt. Ltd.



- Seller
- Buyer
- EPR
- Traceability
- Procure Machines
- No fees

©ReMake is a registered trademark of Gemini Corporation NV



# Our Circular Economy Products

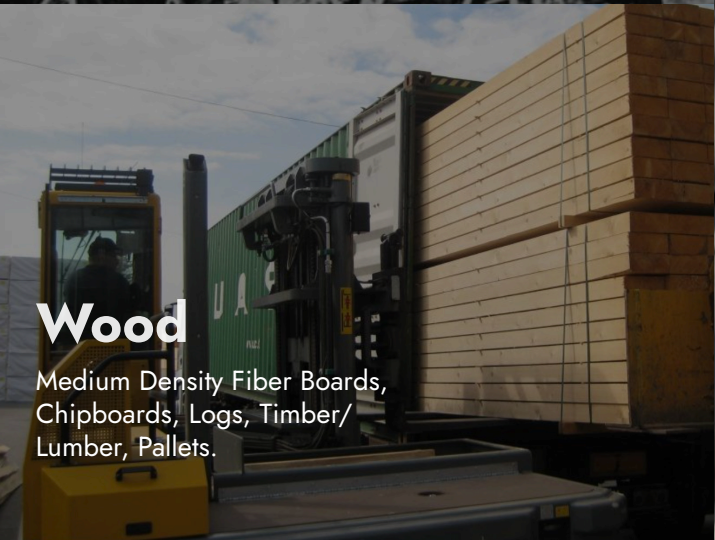
## Plastics

Recyclable plastics & near Prime Resins, Global sourcing & supply of Off-Grade & Reprocessed Plastics.



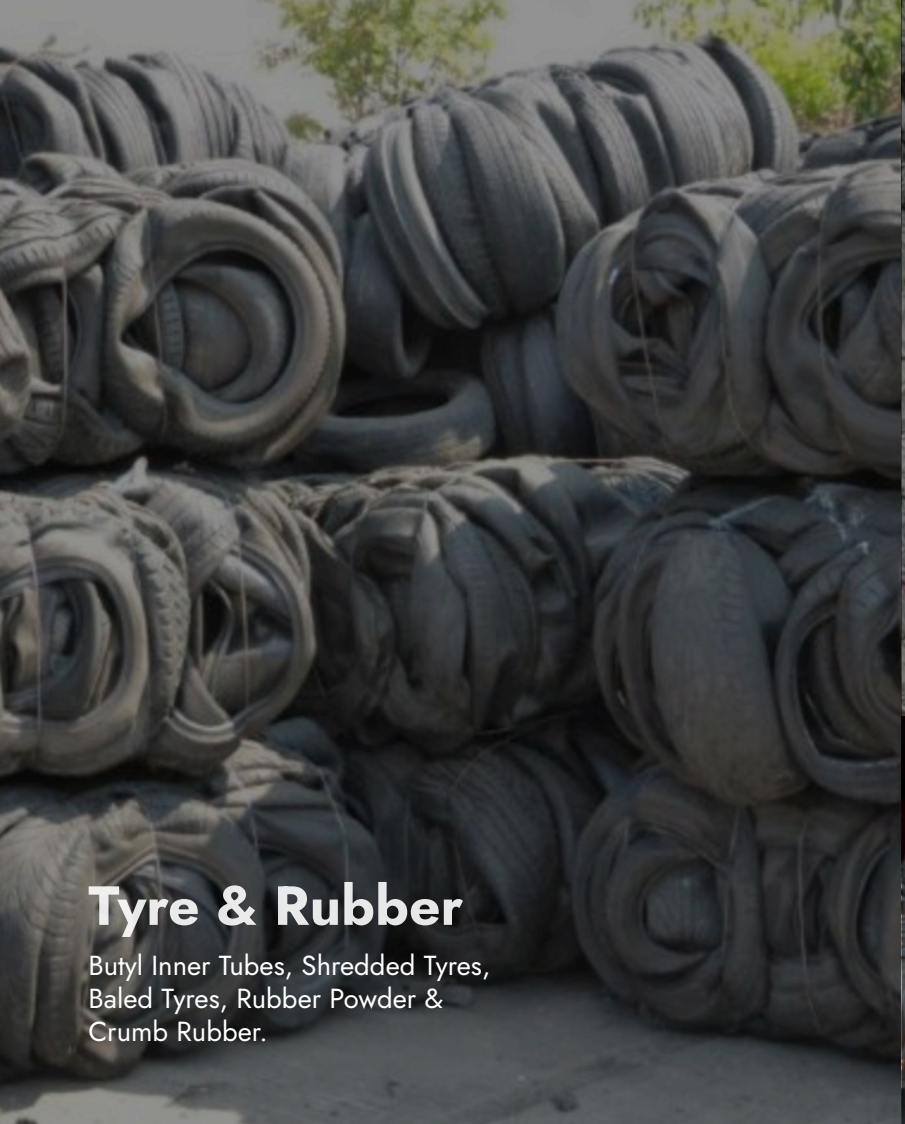
## Metals

Recycling and supply chain management which includes Raw Materials, Second Choice and Prime.



## Wood

Medium Density Fiber Boards, Chipboards, Logs, Timber/ Lumber, Pallets.



## Tyre & Rubber

Butyl Inner Tubes, Shredded Tyres, Baled Tyres, Rubber Powder & Crumb Rubber.



## Paper

Prime Paper, Production Waste & Stock Lot Paper.



## Glass

Bottles & Cullets.

# Baling Program

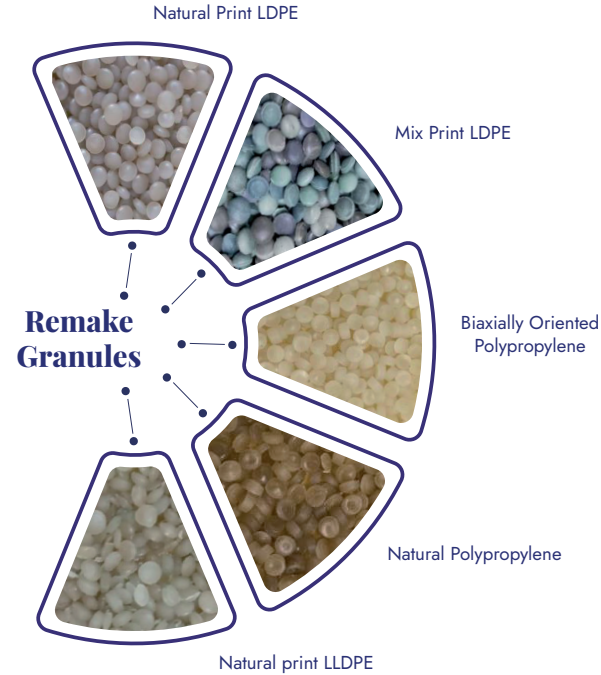


# Closing the Loop



## Remake Granules

Clean plastic materials are fed into a cutting device and reduced to tiny fragments. The sliced pieces are placed in an extruder, where they are melted and turned into lumps of granules.



## Remake Packaging

GemCorp produces post-consumer recycled based ReMake packaging products and supplies it to institutional clients.





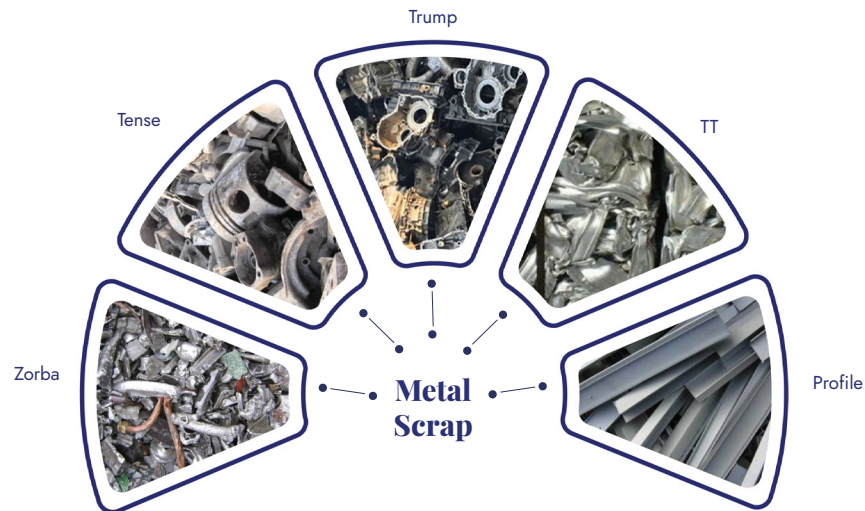
# Metal Recycling Business



## Handling

**42,000 Tonnes of metal scrap annually**

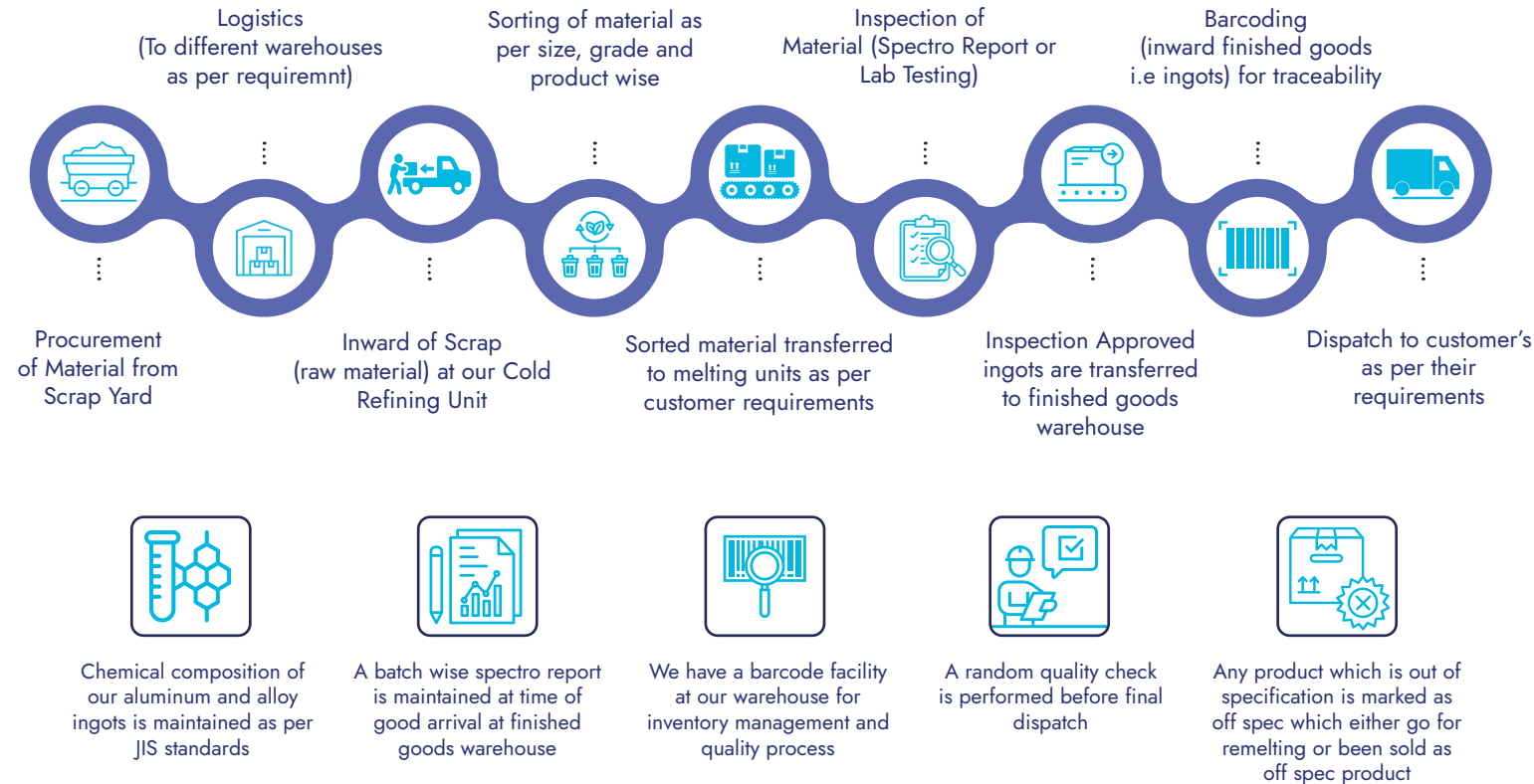
We have our Cold Refining Unit which handles feed of mix metals scrap that includes Zorba, Tense, Trump, Profile, TT, Talic, etc



Converting clean sorted Aluminium scrap to Aluminium Ingots & Billets, (ADC-12, LM-2, LM-6, LM-24, 6063/6061 Billets- 4"/5"/6" Dia, Customized Alloys, Zinc Ingots, Copper Ingots, Production of Secondary Aluminum Alloy Ingots and 96-98% Aluminum Ingots, Aluminum Notch bar and Deox cubes) at our Partner Melting Units.



# Manufacturing Process



# Institutional Recycling



**Ensuring**  
**End-to-end**

recycling of institutional waste for major brands in FMCG, Beverages and e-Commerce

**Implementing**  
**Global** Best Practices

**Providing**  
**Traceability**

of the material from collection until recycling

**Fulfilling**  
**EPR** for renowned brands

**Complying**  
**100%** with regional laws

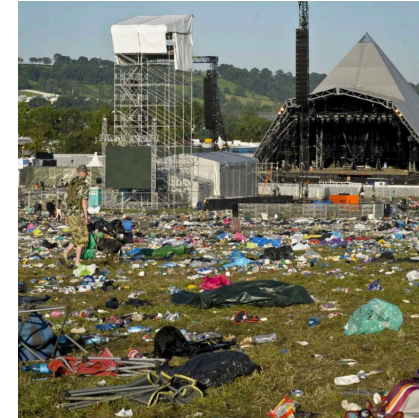


# Waste Recycling Program



## Plant-Waste Management

Institutional waste management with an intent to reduce waste going into oceans and landfills. Recycles the collected waste through the partner recyclers or by installing machines at the institutional units. Participates in various Tenders, and E-auctions held by the brands for their waste management activities.



## Event Waste

Zero waste events are trending worldwide, and GemCorp is here to support and host them. By working with GemCorp, the client can ensure that the event complies with all local laws during the process and protects the environment.



## Infrastructure Dismantling

GemCorp has experience in infrastructure demolition and dismantling across a variety of market sectors and industries. GemCorp has a dedicated management and operations staff, a proprietary specialty equipment fleet, and robust safety culture to deliver quality and value to the customers.

# Reclaimers Outreach Program



There are approximately

**4** million waste pickers

across India who make a living through picking up, cleaning, sorting and segregating recyclable waste.

GemCorp is committed towards improving the working conditions of waste aggregators by providing better infrastructure and training and ensuring they have proper IDs, bank accounts, and social security benefits.

GemCorp identifies waste collectors and their families through its associated baler facilities and provides them with monthly groceries and toys for their children, clothes, footwear, schoolbooks, etc.

Until now we have uplifted more than

**1000** families.



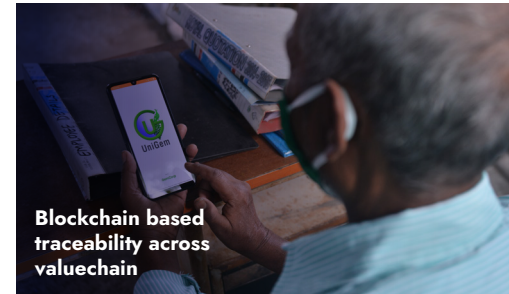
Working with reclaimers at the grassroots level to bring them to an organised sector



Installation of Baling machines free of cost at collection centres



Training and upskilling



Blockchain based traceability across valuechain



No Child Labour and providing minimum wages



Safety and sanitation



Overall upliftment of the reclaimers

# Our Plants



## Ahmedabad

Shed No. 315, GVMM Industrial Estate, Odhav, Ahmedabad, 382410



## Ahmedabad

Survey No. 1158, Near Prince Industrial Hub, Kothia Gam, Indore Highway, Kuha, Ahmedabad, 382433



## Bengaluru

Plot No. 58, Chikkaluru, Venkatapura Village, Tavarekere Hobil, Bengaluru south, 562130



## Bhiwadi- Rajasthan

Plot No. B-35 (A-5), Riico Industrial Area, Khushkhera, Alwar, Rajasthan, 301019



## Navi Mumbai

Plot No. R - 724/A&B, T.T.C. Industrial Area, Rabale, Navi Mumbai, Maharashtra, 400701



*Upcoming new plant in Himmatnagar, Gujarat*

# Contact

GemCorp Recycling & Technologies Private Limited

*Unit No. 701, Akshar Bluechip Corporate Park,  
Plot No-D-263, TTC Industrial Area, Turbhe,  
Navi Mumbai, Maharashtra, 400705*

[info@gemcorprecycling.com](mailto:info@gemcorprecycling.com)

[www.gemcorprecycling.com](http://www.gemcorprecycling.com)



<https://www.facebook.com/people/GemCorp-Recycling-Technologies-Pvt-Ltd/100054805748327/>



<https://twitter.com/gemcorpltd>



<https://youtube.com/@geminirecycling8634>



<https://www.linkedin.com/company/gemcorp-recycling-technologies/mycompany/>



**RECYCLING**

**SOURCING**

**LOGISTICS**

**REPROCESSING**

**FINANCE AND DOCUMENTATION**

**WAREHOUSING**

**SORTING FACILITIES**

